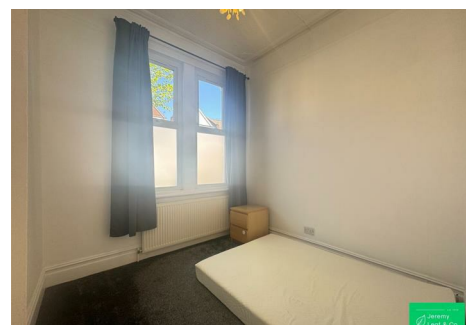


est 1979

Jeremy
Leaf & Co.



est 1979
Jeremy
Leaf & Co.



Cedar Road, London

£1,600 Per Month

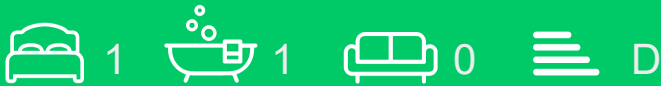
- 1 Bedroom Garden Flat
- Newly Painted
- 15 Mins Walk to Willesden Green Tube
- Quiet Location 2 mins walk to Broadway
- High Ceilings
- Period Property
- New Carpets
- Private Garden
- Double Glazing & Gas Central Heating

98 High Road, London, N2 9EB
020 8444 5222

eastfinchley@jeremyleaf.co.uk
<https://www.jeremyleaf.co.uk/>

Cedar Road, London, NW2 6SS

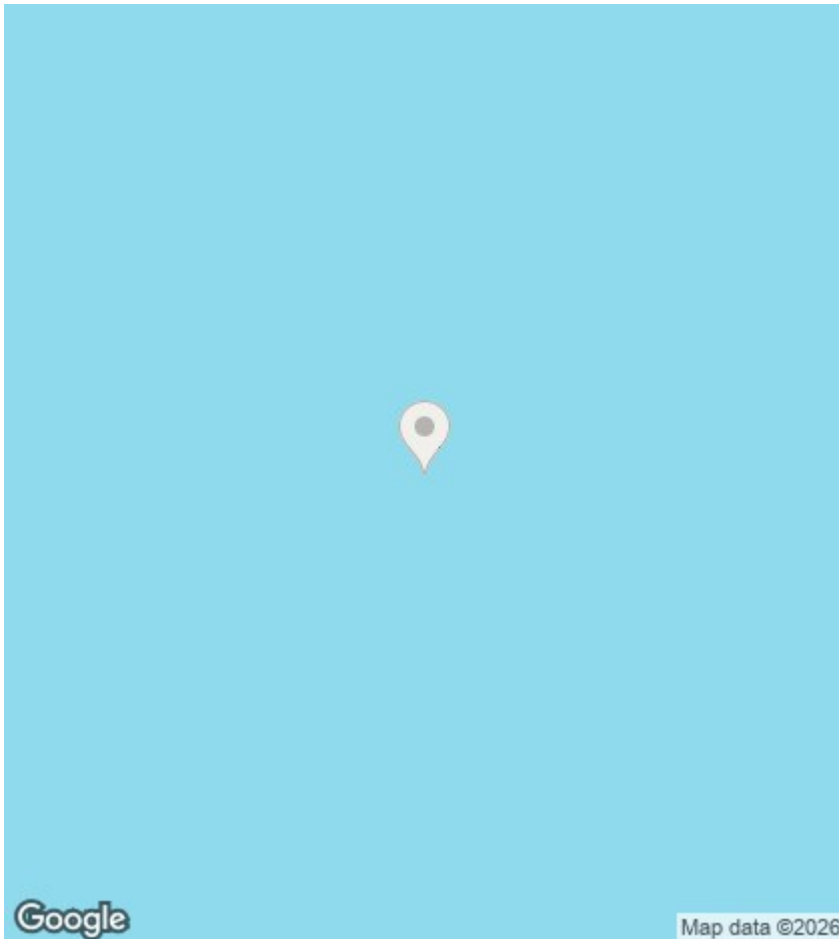
A very well presented unfurnished/part furnished 1 bedroom garden flat set on the ground floor of a period conversion. Comprises a separate kitchen, full bathroom, lounge opening to private garden and 1 double bedroom. Conveniently located close to the vibrant Cricklewood Broadway with an array of shops, busses, cafes and restaurants yet quietly tucked away on a tree lined road. 15 minutes walk to Willesden Green Tube (Jubilee Line zone 2 - arriving at Bond in 15 mins!). EPC band D, Council Tax band C. Available now.



Council Tax Band: D







Directions

Viewings

Viewings by arrangement only. Call 020 8444 5222 to make an appointment.

EPC Rating:

D

